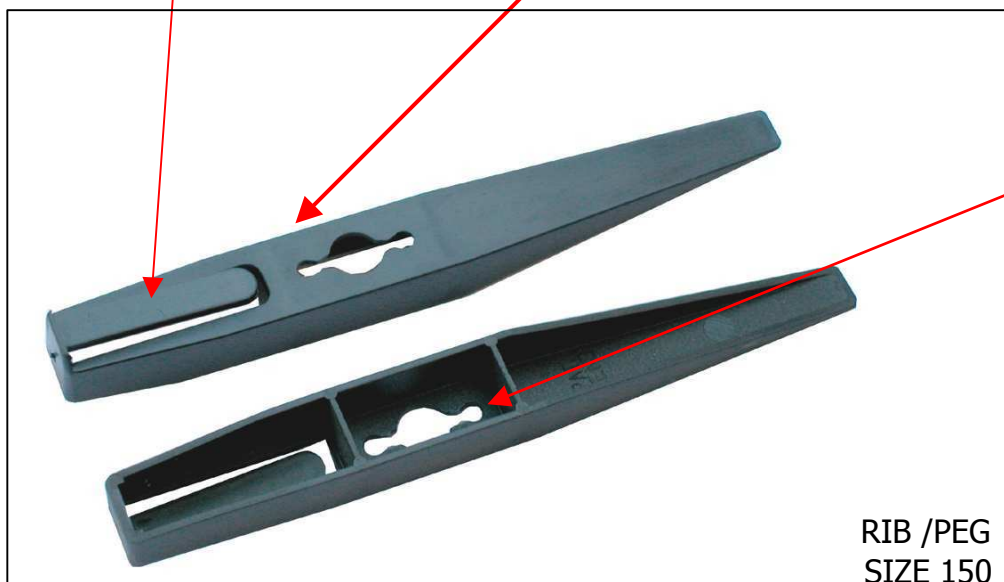


# **RIBS 200 & 150 LACES FOR TROUGHS** **MANUAL**

RIB/ PEG CLIP

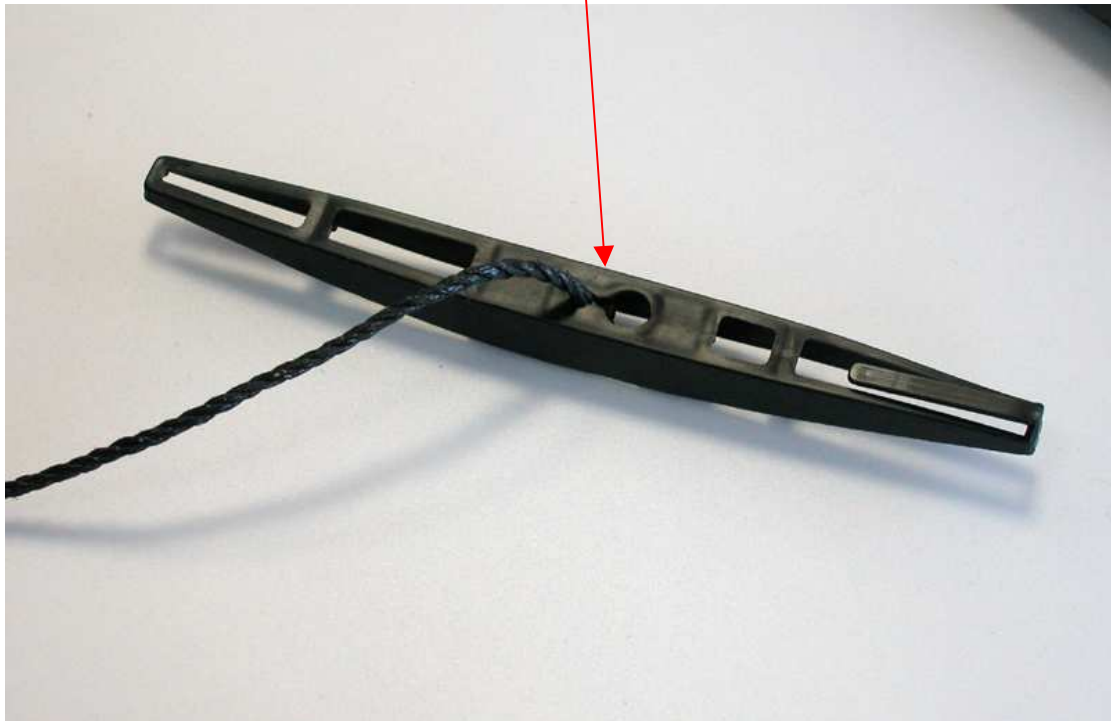
RIB/ PEG HOLE



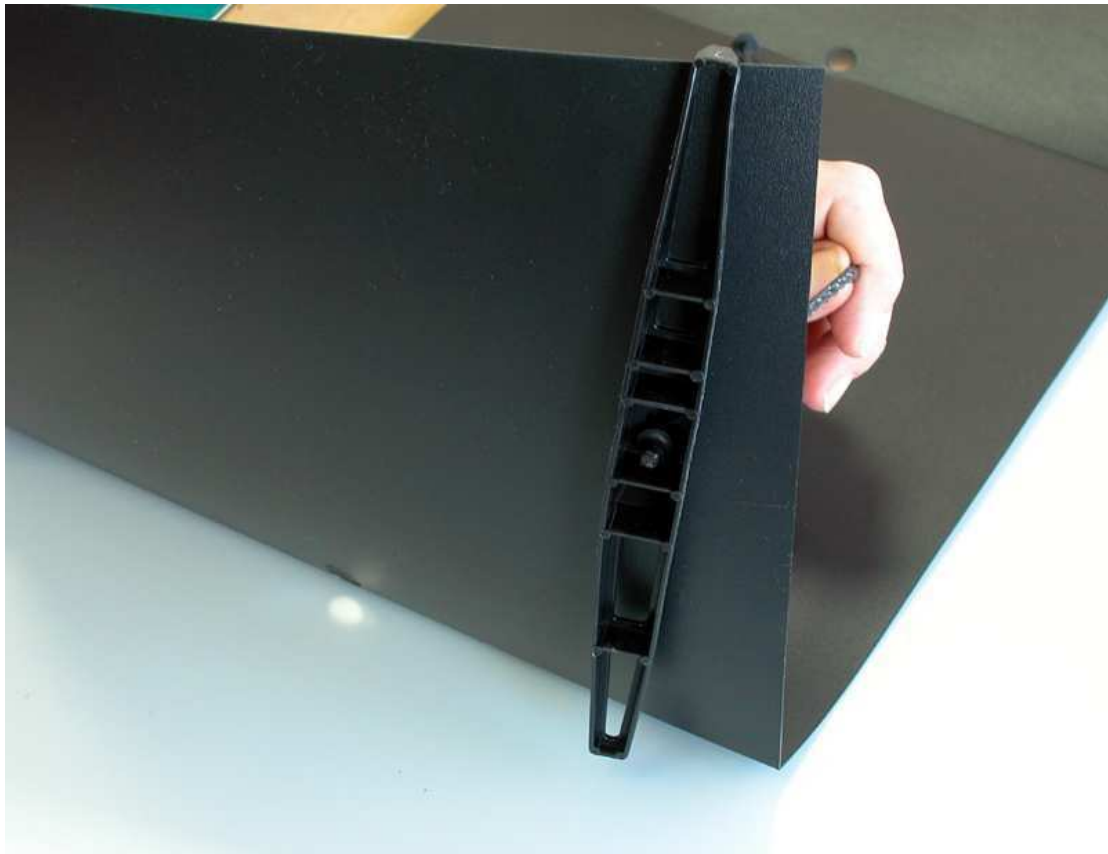
LACES FOR TROUGHS



1. PLACE LACE ENDING INTO THE HOLE OF THE RIB/PEG



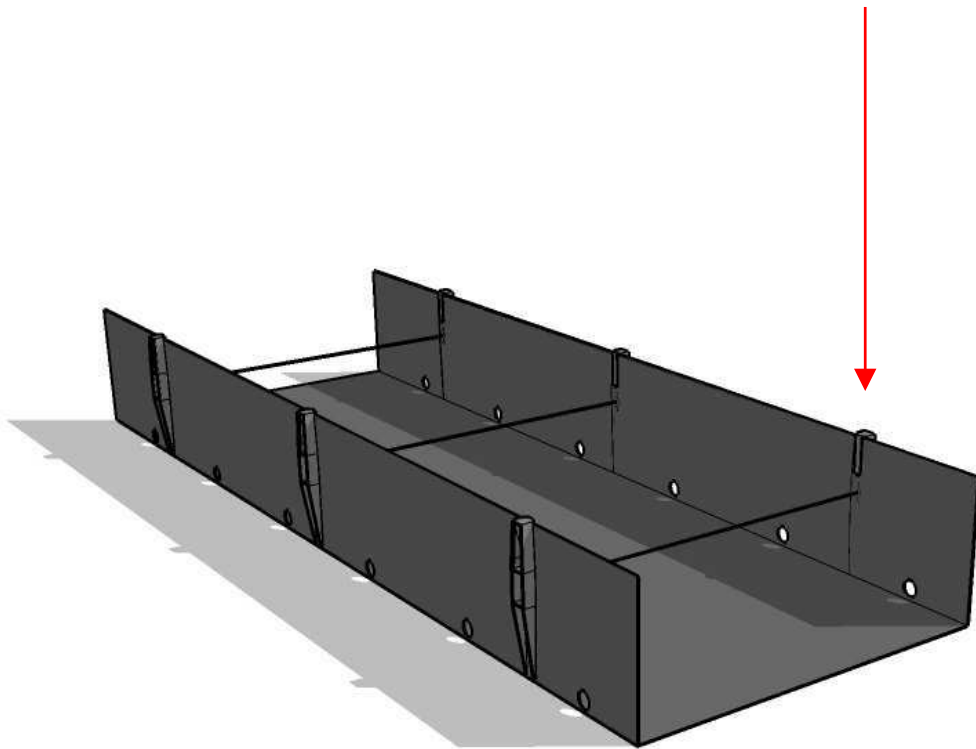
2. PLACE THE RIB/PEG ON SIDE OF THE TROUGH, PULL THE LACE THROUGH THE HOLD AND USING THE RIB/PEG CLIP, ATTACH TO THE TROUGH



3. PUSH THE LACE THROUGH THE OTHER HOLE AND OTHER RIB/PEG, ATTACH THE RIB/ PEG WITH THE LACE TO THE TROUGH



THE FINAL PRODUCT SHOULD LOOK LIKE THIS



IF IN DOUBT...CONTACT US!



MAPAL  
AGRICULTURAL PRODUCTS DIVISION  
MEVO HAMMA, 1293400 ISRAEL

Tel: +972-4-6764754/555/554

Cell: +972-52-8695355

Fax: +972-4-6764756

[rubzvi@mapalplastics.com](mailto:rubzvi@mapalplastics.com)

[danny@mapalplastics.com](mailto:danny@mapalplastics.com)

[mapal@mapalplastics.com](mailto:mapal@mapalplastics.com)

web: <http://www.mapalagro.com>